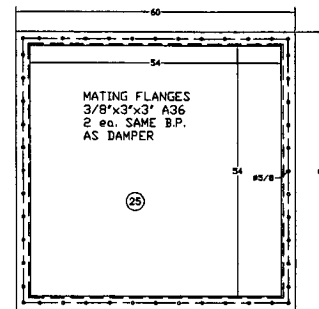


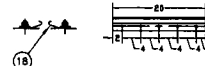
NEW YORK BLOWER  
COMPACT GI, 136 NA  
5 HP 3500 RPM  
TEFC enclosure, 1841 frame  
3 PHASE, 60 CYCLE  
460 VOLT 115 service Factor  
AMP RATINGS AT 460 VOLTS  
7 AMPS AT FULL LOAD  
46 AMPS, LOCKED ROTOR

ITEM	NAME	DESCRIPTION	QTY
25	FIBERGLASS		
24	C12@25	A36	1
23	DUCTWORK	10 GA. A36	1
22	SEAL AIR DAMPER	10 GA. A36	1
21	SEAL AIR FAN	GI 136	1
20	COVER PLATE	1/4" A36	1
19	COVER PLATE	1/4" A36	1
18	CHAMBER SEAL	015" B25	2
17	AIR CHAMBER	3/8"x1.5"x2.75" A36	1
16	BLADE CAP	3/4" A36	1
15	BLADE	3/4" A36B	1
14	DRIVE CHAIN	REX WH-82	2
13	BLADE GUIDES	1/4"x1.5"x1.5" A36	4
12	BLADE STOP	3/4" A36	2
11	IDLER SHAFT	2.5" DIA. 316SS	2
10	BUSHING	STAINCO	4
9	SPROCKET BKT.	3/4" A36	2
8	DRIVEN SHAFT	2.5" DIA. 316SS	1
7	PIPE	4" DIA SCH. 40	1
6	SPROCKET	REXNORD 9-8.99	4
5	DRIVE SHAFT	2.5" DIA. 316SS	1
4	BEARING BKT.	3/4" A36	2
3	ACT. BKT.	A36	1
2	BEARING	DODGE LT-1000	2
1	ACTUATOR	DYNATORQUE BQ-44	1

BMAT



SEAL IS 015" x3-3/8" WIDE  
THREE PIECES WILL OVERLAP TO  
MAKE A 31" OVERALL SPAN



This damper is designed for 0% leakage. However, it is not Fail safe. Proper maintenance of the seals and the correct operation of the seal air blower & damper must be maintained. AHS Co. Inc. and/or any of its suppliers will not be held liable for any injuries that occur due to improper operation or lack of maintenance of the equipment.

CUSTOMER:  
CUSTOMER P.O. #:  
QTY:  
PAIN:  
AHS JOB NO#:

Two  
Hi-Temp Black  
2469

REV.	DESCRIPTION	DATE	BY	CHK.
1	ISSUED FOR PRODUCTION		KE	
2	CHECKED BY:			
3	DATE:			
4	APPROVED BY:			
5	TITLE: Fan Isolation Gullotine Damper			
6	DRAWING NO. 2469-001			